

FlexRite™ MT2 Modular Interlocking Tile

Designed to easily build a custom sized floor with standard tiles, ramps, and corners in dry or wet areas

- Location: Indoor, Outdoor, Platform, Walkway, Workstation, Custom
- Environment: Dry, Wet, Oily, Slippery



- **INTERLOCKING** | Use positive locking connectors to connect multiple tiles together. Ramps and corners to build a surface to specific dimensions. Use MT2.78x4x18.CT.BK connectors to connect MT2 tiles to our AD2 rubber drainage mats or many of the open hole design mats on the market today
- **VERSATILE** | Easy installation, reconfiguration, available in 5 & 6s colors and designed to run cords through the channels underneath. Symmetrical design allows you to cut and reconfigure mat in 3" increments. Use MT2.78x1x3xCT.BK *SureLok* connectors to reattach cut pieces to make custom sizes or floor demarcation lines that will never peel
- **FLEXIBILITY** | Quickly & easily build to any size or shape required using 1'x1' or 2'x2' tiles. Reconfigure as needed. Add safety edging to entry or exit areas. Larger tiles cover areas quicker with less pieces and seams. Use smaller tiles around fixtures or to get the perfect fit
- **DURABLE** | Heavy duty, cutting fluid, grease & oil proof; tough abrasion & chemical resistance; welding safe; UV resistant
- **SAFE** | Slip-resistant high coefficient of friction materials & design. Using 2'x2' tiles results in half as many seams as 18"x18" tiles. Applied for NFSI certification
- **COMFORT** | Compression (soft rubber compound) and deflection (underside design pattern) work together to give maximum comfort standing still or walking across the mat
- **COMPOUND** | ReviveRite™ high quality rubber and eco-TPE compounds derived from 100% REALcycled polymers providing nitrile rubber equivalent chemistry.

FLEXIBLE DESIGN

MT2 is heavy duty and durable. Made from ReviveRite™ compound, it is designed to stand up to harsh chemicals while maintaining a high traction surface. It's the best tile system in the industry with the perfect balance built into the compound. All the positive traits of rubber (soft, high traction, welding safe, ESD) and the positive traits of plastics (positive locking system, cut & reconfigure, multiple colors). Use stock parts to build a customized floor at an affordable price.



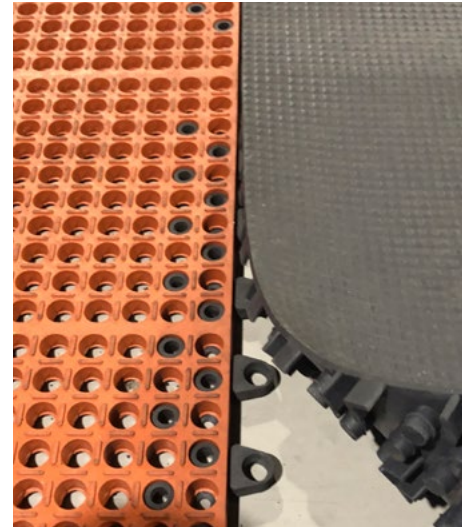
FlexRite™ MT2 Modular Interlocking Tile

WHAT IS REVIVERITE Inside! ?

All FlexRite™ mats and interlocking tiles are molded using 100% post-consumer and post-industrial polymers REALcycled in an environmentally friendly way in our vertically integrated facilities. The ReviveRite™ process uses food and medicine grade additives to restore the original technical capabilities of various post-use polymers without the harmful side effects of foreign rubber reclaiming process. We produce superior cost-performance compounds that translate into higher-polymer-content, and as such, higher quality molded products as compared to typical products derived from virgin polymers.

MT2 7/8" MODULAR INTERLOCKING TILE SYSTEM

Part Number	Description	Color	Size*	Weight
MT2.78x12x12.DI.BK	Diamondplate	Black	12" x 12"	2.0 lbs.
MT2.78x12x12.DR.BK	Drainage	Black	12" x 12"	2.0 lbs.
MT2.78x12x12.PY.BK	Pyramid	Black	12" x 12"	2.1 lbs.
MT2.78x12x12.SM.BK	Smooth	Black	12" x 12"	2.0 lbs.
MT2.78x24x24.DI.BK	Diamondplate	Black	24" x 24"	7.7 lbs.
MT2.78x24x24.DR.BK	Drainage	Black	24" x 24"	7.5 lbs.
MT2.78x24x24.PY.BK	Pyramid	Black	24" x 24"	7.8 lbs.
MT2.78x24x24.SM.BK	Smooth	Black	24" x 24"	7.7 lbs.
MT2.78x1x3xCT.BK	SureLok Connector	Black	1" x 3"	0.1 lbs.
MT2.78x4x18.CT.BK	Mat/Tile Connector	Black	4" x 18"	0.4 lbs.
MT2.78x6x12.R.YL	Ramp	Yellow	6" x 12"	0.7 lbs.
MT2.78x6x24.R.YL	Ramp	Yellow	6" x 24"	1.3 lbs.
MT2.78x6x18xCT.YL	Outside Corner	Yellow	6" x 18"	1.6 lbs.
MT2.78x6x12xCI.YL	Inside Corner	Yellow	6" x 12"	1.3 lbs.



Available Surface Patterns: Pyramid, Diamondplate, Smooth, Smooth Drainage

Available Tile Colors: BK-Black, BL-Blue, GN-Green, GY-Grey, OR-Orange, RD-Red, TL-Translucent, WH-White

Available Ramp Colors: BK-Black, YL-Yellow

* Sizes are approximate | * Some colors require minimum quantities



MT2.78x1x3xCT.BK
SureLok Connector Black - Mat to Mat Connector



MT2.78x4x18.CT.BK
Anti-Fatigue Drainage Mat to MT2 Tile Connector



519.682.2764 FlexRite.com © 2022-2023



MT2-2210 R2305